

82811 - 65 Pc. Ratcheting Tap and Die Set SAE

Item No.	Description
82800	Large Tap and Die Ratcheting "T" Wrench
82801	Large Locking Tap Adapter
82802	Large Hex Die Adapter
3881	Medium Tap and Die Ratcheting "T" Wrench
3883	Medium Tap Adapter
3882	Small Tap Adapter
3884	Medium Hex Die Adapter
82803	Male Extension Adapter - 3/8" Drive
82804	Female Extension Adapter - 3/8" Drive
	Sliding "T" for Adapters
	4mm Hex Key
	5 Screw Extractors
	SAE Thread Gauge

Taps

1/4 - 18 NC taper
9/16 - 18 NF plug
5/8 - 11 NC plug
5/8 - 18 NF plug
1/8 - 27 NPT
5/16 - 18 NC taper
5/16 - 24 NF taper
3/8 - 16 NC plug
3/8 - 24 NF plug
7/16 - 14 NC plug
7/16 - 20 NF plug
1/2 - 13 NC plug
1/2 - 20 NF plug
4 - 40 taper
6 - 32 taper
8 - 32 taper
10 - 24 taper
10 - 32 taper
12 - 24 taper
1/4 - 20 NC taper
1/4 - 28 NF taper
3/4 - 10 NC plug
3/4 - 16 NF plug
1/8 - 27 NPT

Hex Dies

4 - 40 taper
5/16 - 18 NC taper
5/16 - 24 NF taper
3/8 - 16 NC plug
3/8 - 24 NF plug
7/16 - 14 NC plug
7/16 - 20 NF plug
1/2 - 13 NC plug
1/2 - 20 NF plug
6 - 32 taper
8 - 32 taper
10 - 24 taper
10 - 32 taper
12 - 24 taper
1/4 - 20 NC taper
1/4 - 28 NF taper
9/16 - 12 NC plug
9/16 - 18 NF plug
5/8 - 11 NC plug
5/8 - 18 NF plug
3/4 - 10 NC plug
3/4 - 16 NF plug
1/8 - 27 NPT
1/4 - 18 NPT



PATENTED

SETS

RATHETING TAPS & DIES



82810 - 65Pc. Ratcheting Tap and Die Set METRIC

Item No.	Description
82800	Large Ratcheting "T" Wrench
82801	Large Locking Tap Adapter
82802	Large Hex Die Adapter
3881	Medium Tap and Die Ratcheting "T" Wrench
3883	Medium Tap Adapter
3882	Small Tap Adapter
3884	Small Die Adapter
82803	Male Extension Adapter - 3/8" Drive
82804	Female Extension Adapter - 3/8" Drive
	Sliding "T" for Adapters
	4mm Hex Key
	5 Screw Extractors
	Metric Thread Gauge

Taps

- 3 x .50 taper
- 3 x .60 taper
- 4 x .70 taper
- 4 x .75 taper
- 5 x .80 taper
- 5 x .90 taper
- 6 x 1.00 taper
- 7 x 1.00 taper
- 8 x 1.25 plug
- 9 x 1.00 plug
- 9 x 1.25 plug
- 10 x 1.25 plug
- 10 x 1.50 plug
- 11 x 1.50 plug
- 12 x 1.50 plug
- 12 x 1.75 plug
- 14 x 1.25 plug
- 14 x 2.00 plug
- 16 x 1.50 plug
- 16 x 2.00 plug
- 18 x 1.50 plug
- 18 x 2.50 plug
- 1/8 - 28 BSP
- 1/4 - 19 BSP

Hex Dies

- 3 x .50
- 3 x .60
- 4 x .70
- 4 x .75
- 5 x .80
- 5 x .90
- 6 x 1.00
- 7 x 1.00
- 8 x 1.25
- 9 x 1.00
- 9 x 1.25
- 10 x 1.25
- 10 x 1.50
- 11 x 1.50
- 12 x 1.50
- 12 x 1.75
- 14 x 1.25
- 14 x 2.00
- 16 x 1.50
- 16 x 2.00
- 18 x 1.50
- 18 x 2.50
- 1/8 - 28 BSP
- 1/4 - 19 BSP

SETS
RATCHETING TAPS & DIES

82808 - 17 Pc. Large Ratcheting Tap and Die Set SAE

Item No.	Description
82800	Large Ratcheting "T" Wrench
82801	Large Locking Tap Adapter
82802	Large Hex Die Adapter
	SAE Thread Gauge
	4mm Hex Key

Taps	Hex Dies
9/16 - 12 NC plug	9/16 - 12 NC
9/16 - 18 NF plug	9/16 - 18 NF
5/8 - 11 NC plug	5/8 - 11 NC
5/8 - 18 NF plug	5/8 - 18 NF
3/4 - 10 NC plug	3/4 - 10 NC
3/4 - 16 NF plug	3/4 - 16 NF



PATENTED

82809 - 17 Pc. Large Ratcheting Tap and Die Set METRIC

Item No.	Description
82800	Large Ratcheting "T" Wrench
82801	Large Locking Tap Adapter
82802	Large Hex Die Adapter
	Metric Thread Gauge
	4mm Hex Key

Taps	Hex Dies
14 x 1.25 plug	14 x 1.25 plug
14 x 2.00 plug	14 x 2.00 plug
16 x 1.50 plug	16 x 1.50 plug
16 x 2.00 plug	16 x 2.00 plug
18 x 1.50 plug	18 x 1.50 plug
18 x 2.50 plug	18 x 2.50 plug



PATENTED



PATENTED

82807 - 11 Pc. Master Ratcheting Tap and Die Drive Tool Set

Item No.	Description
82800	Large Ratcheting "T" Wrench
82801	Large Locking Tap Adapter
82802	Large Hex Die Adapter
3881	Medium Ratcheting "T" Wrench
3883	Medium Tap Adapter
3882	Small Tap Adapter
3884	Medium Hex Die Adapter
82803	Male Extension Adapter - 3/8" Drive
82804	Female Extension Adapter - 3/8" Drive
	Sliding "T" for Adapters
	4mm Hex Key



PATENTED

3880 - 5 Pc. Medium Ratcheting Tap and Die Drive Tool Set

Item No.	Description
3881	Medium Ratcheting "T" Wrench
3882	Small Tap Adapter
3883	Medium Tap Adapter
3884	Medium Hex Die Adapter
	Sliding "T" for Adapters



PATENTED

82806 - 4 Pc. Large Ratcheting Tap and Die Drive Tool Set

Item No.	Description
82800	Large Ratcheting "T" Wrench
82801	Large Locking Tap Adapter
82802	Large Hex Die Adapter
	4mm Hex Key

82805 - 2 Pc. Ratcheting Tap and Die 3/8" Drive Extension Adater Set

Item No.	Description
82803	Male Extension Adapter - 3/8" Drive
82804	Female Extension Adapter - 3/8" Drive



PATENTED

Open Stock - Ratcheting "T" Wrench

Item No.	Description
3881	Medium Ratcheting "T" Wrench
82800	Large Ratcheting "T" Wrench



PATENTED

Open Stock - Tap Adapter

Item No.	Description
3882	Small Tap Adapter
3883	Medium Tap Adapter



PATENTED

82801 - Large Locking Tap Adapter

- Accomodates taps up to 9/16" - 3/4" and 14mm - 18mm.



PATENTED

Open Stock - Hex Die Adapter

Item No.	Description
3884	Medium Hex Die Adapter
82802	Large Hex Die Adapter



PATENTED

	Sizes	
	SAE	METRIC
Small Tap Adapter	4 - 40 - 12 - 24	
Medium Tap Adapter	1/4" - 1/2"	3mm - 12mm
Large Tap Adapter	9/16" - 3/4"	14mm - 18mm
Medium Hex Die Adapter	1/4" - 1/2"	3mm - 12mm
Large Hex Die Adapter	9/16" - 3/4"	14mm - 18mm



Open Stock - Die Replacement Parts

Item No.	Description
388735	4 x 40 NC Single Hex Die
388736	6 x 32 NC Single Hex Die
388737	8 x 32 NC Single Hex Die
388738	10 x 24 NC Single Hex Die
388739	10 x 32 NF Single Hex Die
388740	12 x 24 NC Single Hex Die
388741	14 x 20 NC Single Hex Die
388742	1/4" x 28 NF Single Hex Die
388743	5/16" x 18 NC Single Hex Die

Item No.	Description
388744	5/16" x 24 NF Single Hex Die
388745	3/8" x 16 NC Single Hex Die
388746	3/8" x 24 NF Single Hex Die
388747	7/16" x 14 NC Single Hex Die
388748	7/16" x 20 NF Single Hex Die
388749	1/2" x 13 NC Single Hex Die
388750	1/2" x 20 NF Single Hex Die
388751	3 mm x .50 Die
388752	3 mm x .60 Die
388753	4 mm x .70 Die
388754	4 mm x .75 Die
388755	5 mm x .80 Die
388756	5 mm x .90 Die
388757	6 mm x 1.00 Die
388758	7 mm x 1.00 Die
388759	8 mm x 1.25 Die

Item No.	Description
388760	9 mm x 1.00 Die
388761	9 mm x 1.25 Die
388762	10 mm x 1.25 Die
388763	10 mm x 1.50 Die
388764	11 mm x 1.50 Die
388765	12 mm x 1.50 Die
388766	12 mm x 1.75 Die
82863	9/16 12 NC Single Hex Die
82864	9/16 18 NF Single Hex Die
82865	5/8 11NC Single Hex Die
82866	5/8 18 NF Single Hex Die
82867	3/4 10 NC Single Hex Die
82868	3/4 16 NF Single Hex Die
82869	1/4 18 NPT PIPE Hex Die
388768	1/8" x 28 BSP Pipe Hex Die



Open Stock - Tap Replacement Parts

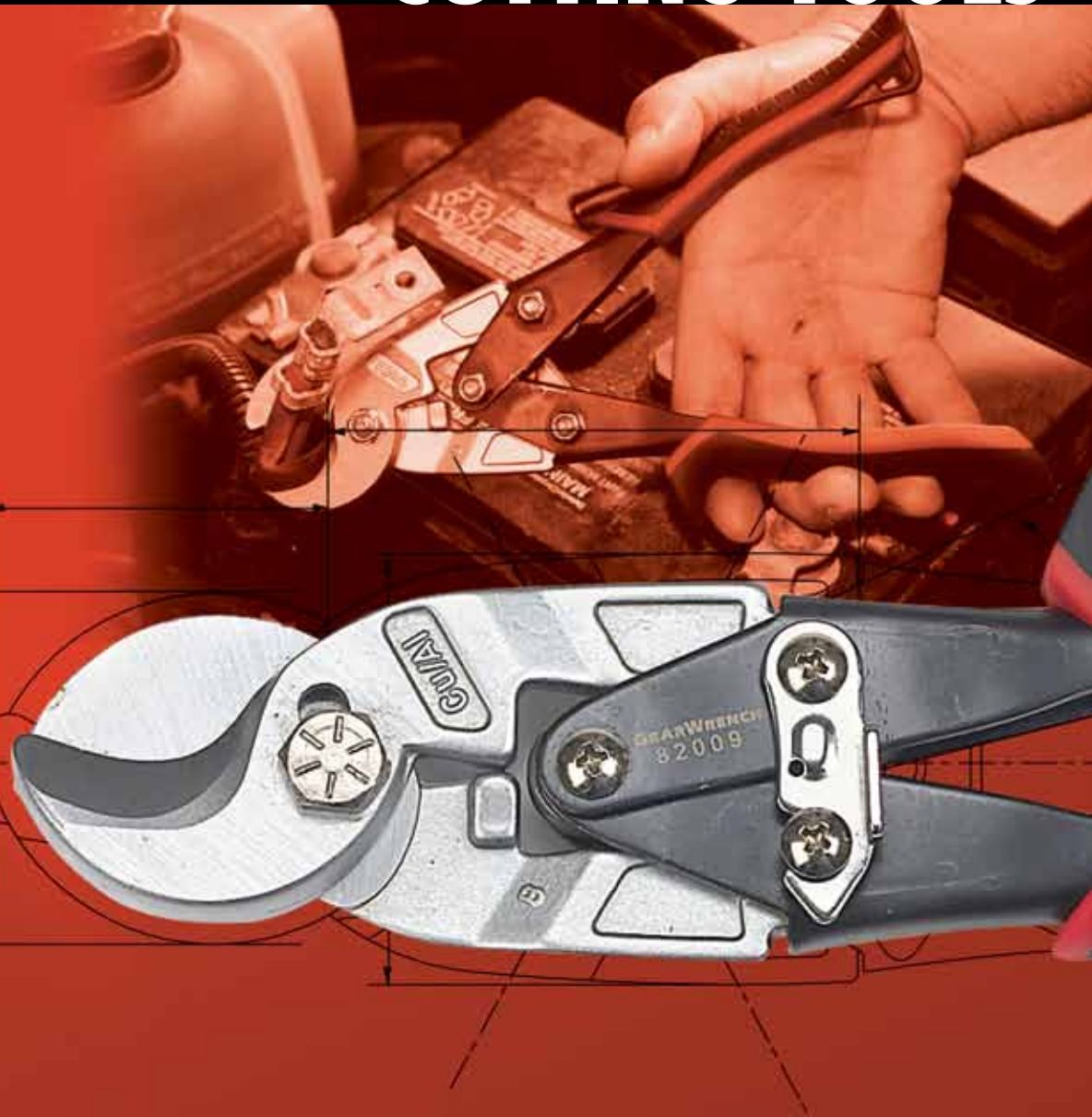
Item No.	Description
388701	4 x 40 NC Plug Tap
388702	6 x 32 NC Plug Tap
388703	8 x 32 NC Plug Tap
388704	10 x 24 NC Plug Tap
388705	10 x 32 NF Plug Tap
388706	12 x 24 NC Plug Tap
388707	1/4" x 20 NC HSS Plug Tap
388708	1/4" x 28 NF HSS Plug Tap
388709	5/16" x 18 NC Plug Tap
388710	5/16" x 24 NF Plug Tap
388711	3/8" x 16 NC Plug Tap

Item No.	Description
388712	3/8" x 24 NF Plug Tap
388713	7/16" x 14 NC Plug Tap
388714	7/16" x 20 NF Plug Tap
388715	1/2" x 13 NC Plug Tap
388716	1/2" x 20 NF Plug Tap
388733	1/8" x 28 BSP Pipe Tap
388734	1/8" x 27 NPT HSS Pipe Tap
388717	3 mm x .50 Plug Tap
388718	3 mm x .60 Plug Tap
388719	4 mm x .70 Plug Tap
388720	4 mm x .75 Plug Tap
388721	5 mm x .80 Plug Tap
388722	5 mm x .90 Plug Tap
388723	6 mm x 1.00 Plug Tap
388724	7 mm x 1.00 Plug Tap
388725	8 mm x 1.25 Plug Tap
388726	9 mm x 1.00 Plug Tap
388727	9 mm x 1.25 Plug Tap

Item No.	Description
388728	10 mm x 1.25 Plug Tap
388729	10 mm x 1.50 Plug Tap
388730	11 mm x 1.50 Plug Tap
388731	12 mm x 1.50 Plug Tap
388732	12 mm x 1.75 Plug Tap
82850	14 x 1.25 mm Plug Tap
82851	14 x 2.00 mm Plug Tap
82852	16 x 1.50 mm Plug Tap
82853	16 x 2.00 mm Plug Tap
82854	18 x 1.50 mm Plug Tap
82855	18 x 2.50 mm Plug Tap
82856	9/16 12 NC Plug
82857	9/16 18 NF Plug
82858	5/8 11 NC Plug
82859	5/8 18 NF Plug
82860	3/4 10 NC Plug
82861	3/4 16 NF Plug
82862	1/4 18 NPT PIPE Tap

* All taps and dies are Carbon Steel

CUTTING TOOLS



Cutting Tools

Hack Saw
Utility Knife
Files
Snips
Cable Cutter



82880 - High Tension Hacksaw

- High tension design works with Carbon Steel and Bi-metal blades.
- Flush cut 45 degree angles.
- Strong tubular frame.
- Dual grips front and back offer additional control.



82881 - Folding Utility Knife

- 3" lock blade with serrated edge for rough cuts.
- Standard folding utility knife for sharper, delicate cuts.
- Easy blade release.
- Dual material body.
- Storage pouch included.



82820 - 4 Pc. Standard Bastard Files Set

Item No.	Description
82822	8" Flat File
82823	8" Round File
82824	8" Half Round File
82825	8" Triangle File



82821 - 6 Pc. Mini Bastard Files Set

Item No.	Description
82826	4" Flat Mini File
82827	4" Half Round Mini File
82828	4" Round Mini File
82829	4" Triangle Mini File
82830	4" Square Mini File
82831	4" Knife Mini File

CUTTING TOOLS

82822 - 8" Flat Bastard File

- A workhorse file for removing flash and other particles.
- Overall length 12.75", Weight 0.45 lbs.



82823 - 8" Round Bastard File

- For enlarging curved or round openings.
- Overall Length 12.75", Weight 0.30 lbs.



82824 - 8" Half Round Bastard File

- Provides spiral cut for smooth finish. Curved on one side and flat on the other.
- Overall length 12.75", Weight 0.45 lbs.



82825 - 8" Triangle Bastard File

- Used for cutting and cleaning corners.
- Overall length 12.75", Weight 0.45 lbs.



82826 - 4" Flat Mini Bastard File

- Offers precision file applications on flat surfaces.
- Overall length 7.50", Weight 0.05 lbs.



82827 - 4" Half Round Mini Bastard File

- For curved and flat surfaces.
- Overall length 7.50", Weight 0.05 lbs.



82828 - 4" Round Mini Bastard File

- For curved surface or hole enlargement.
- Overall length 7.50", Weight 0.05 lbs.



82829 - 4" Triangle Mini Bastard File

- Use for cutting corners and in tight confines.
- Overall length 7.50", Weight 0.05 lbs.



82830 - 4" Square Mini Bastard File

- Versatile for corners or flat areas.
- Overall length 7.50", Weight 0.05 lbs.



82831 - 4" Knife Mini Bastard File

- Deep corners or for cutting grooves.
- Overall length 7.50", Weight 0.05 lbs.





82843 - 3 Pc. Aviation Snip Set

Item No.	Description
82840	Straight Cutting Aviation Snips
82841	Right Cutting Aviation Snips
82842	Left Cutting Aviation Snips

- Dual material comfort grip.
- Spring loaded.
- Serrated and hardened jaws for clean cuts.
- Quick color identification.



82840 - Straight Cutting Aviation Snips



82841 - Right Cutting Aviation Snips



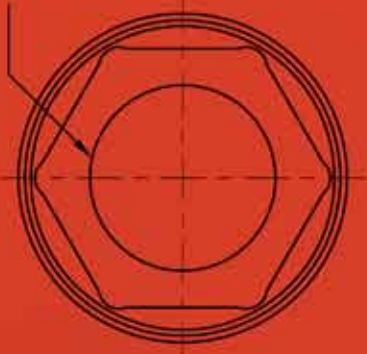
82842 - Left Cutting Aviation Snips



82009 - 10" Cable Cutter

- Designed for cutting standard style cable.
- Dual material grip for comfort.
- Ideal for cutting battery cables.

SPECIALTY & GENERAL PURPOSE TOOLS



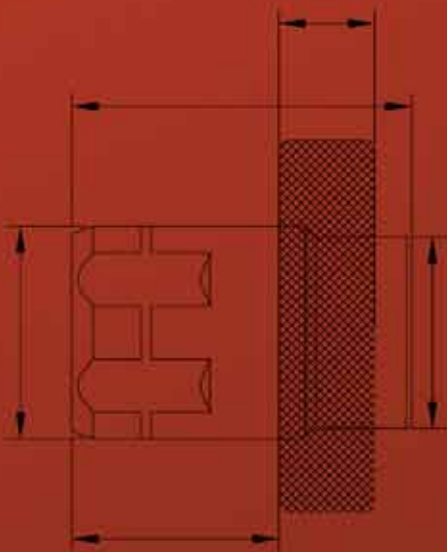
Specialty Tools

Oil Drain Plug Sockets
Serpentine Belt Tool
Hooks and Picks

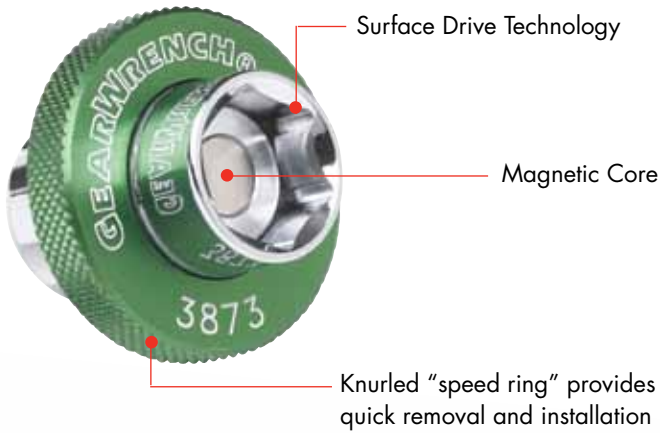
Scrapers
Door Panel Removers
Trim Pad Tool

General Purpose Tools

Tape Measure
Flashlight
Gloves



**OIL DRAIN
PLUG SOCKETS**



Can be used with Pass-Thru® Ratchets Featuring GearRatchet™ handles, or standard 3/8" Drive ratchets

SPECIALTY & GENERAL



Serrated edges provide added grip for those hard-to-reach fasteners



Products are covered by one or more of the following patents:

- US 7,159,491
- US 7,658,132

3680 - 15 Pc. Serpentine Belt Tool Set

Item No.	Description
3680-71	Long Bar
3680-72	GearWrench® Special Ratcheting Wrench
3680-73	3/8" Adapter
3680-74	1/2" Adapter
3680-75	3/4" Adapter
3680-76	6 Pt. 13 mm Socket
3680-77	6 Pt. 14 mm Socket
3680-78	6 Pt. 15 mm Socket
3680-79	6 Pt. 16 mm Socket
3680-80	6 Pt. 17 mm Socket
3680-81	6 Pt. 18 mm Socket
3680-82	6 Pt. 19 mm Socket
3680-83	13 mm Crowfoot
3680-84	14 mm Crowfoot
3680-85	15 mm Crowfoot



3870 - 7 Pc. Magnetic Oil Drain Plug Socket Set

Item No.	Description
235080GR	3/8" (20 mm) GearRatchet® Handle
3872	13 mm Magnetic Oil Drain Plug Socket
3873	14 mm Magnetic Oil Drain Plug Socket
3874	15 mm Magnetic Oil Drain Plug Socket
3875	16 mm Magnetic Oil Drain Plug Socket
3876	17 mm Magnetic Oil Drain Plug Socket
3877	19 mm Magnetic Oil Drain Plug Socket



3871 - 6 Pc. Magnetic Oil Drain Plug Socket Set

Item No.	Description
3872	13 mm Magnetic Oil Drain Plug Socket
3873	14 mm Magnetic Oil Drain Plug Socket
3874	15 mm Magnetic Oil Drain Plug Socket
3875	16 mm Magnetic Oil Drain Plug Socket
3876	17 mm Magnetic Oil Drain Plug Socket
3877	19 mm Magnetic Oil Drain Plug Socket





Open Stock - Magnetic Oil Drain Plug Sockets

Item No.	Description
3872	13 mm Magnetic Oil Drain Plug Socket
3873	14 mm Magnetic Oil Drain Plug Socket
3874	15 mm Magnetic Oil Drain Plug Socket
3875	16 mm Magnetic Oil Drain Plug Socket
3876	17 mm Magnetic Oil Drain Plug Socket
3877	19 mm Magnetic Oil Drain Plug Socket



84000 - 7 Pc. Hook & Pick Set

Item No.	Description
84001	5" Cotter Pin Puller
84002	4" Hose Pick Puller
84003	4-1/2" Awl
84004	3-1/8" Mini Full Hook
84005	3-1/8" 90° Mini Hook
84006	3-1/8" Straight Mini Hook
84007	3-1/8" Mini Offset Hook



84040 - 4 Pc. Mini Hook & Pick Set

Item No.	Description
84004	3-1/8" Mini Full Hook
84005	3-1/8" 90° Mini Hook
84006	3-1/8" Straight Mini Hook
84007	3-1/8" Mini Offset Hook

SPECIALTY & GENERAL OPEN STOCK

84001 - 5" Cotter Pin Puller

- Good for seal pick and other general cleaning projects including cotter pins.
- Overall Length 9.50", Weight 0.25 lbs.



84002 - 4" Hose Pick Puller

- Good for hose removal, spring clamps or other prying.
- Overall Length 8", Weight 0.20 lbs.



84003 - 4-1/2" Awl

- Use as scratch awl or hole punch.
- Overall Length 9.50", Weight 0.20 lbs.



84004 - 3-1/8" Mini Full Hook

- Good for hooking springs and other objects.
- Small size for tight access areas.
- Overall Length 6.50", Weight 0.05 lbs.



84005 - 3-1/8" 90° Mini Hook

- Use for seal pick removal.
- Overall Length 6.50", Weight 0.05 lbs.



84006 - 3-1/8" Straight Mini Hook

- Good to use as hole punch and mini scratch awl.
- Overall Length 6.50", Weight 0.05 lbs.



84007 - 3-1/8" Mini Offset Hook

- Use for seals and delicate cleaning applications.
- Overall Length 6.50", Weight 0.05 lbs.





84070 - 2 Pc. Scraper Set

Item No.	Description
84071	1" Reverse Scraper
84072	1" Offset Scraper



84080 - 4 Pc. Scraper Set

Item No.	Description
84081	1/4" x 8" Scraper
84082	1/2" x 8" Scraper
84083	1" x 8" Scraper
84084	1" x 3-3/4" Scraper



84060 - 4 Pc. Door Panel Kit

Item No.	Description
84061	20" Door Panel Remover
84063	Door Panel Remover - Square
84064	Door Panel Remover - V
84065	Trim Pad Tool



84062 - 10" Door Panel Remover - U



84050 - 4 Pc. Door Pad and Panel Removal Kit

Item No.	Description
84051	4" V-Notch Puller
84052	4" Square Notch Puller
84053	4" Scraper
84054	4" Curved Blade V-Notch Puller

84051 - 4" V-Notch Puller

- Minimize damage on door panels and other interior auto applications.
- Overall Length 8.63", Weight 0.20 lbs.



84052 - 4" Square Notch Puller

- Designed for offset applications and getting around obstacles.
- Overall Length 10.00", Weight 0.50 lbs.



84053 - 4" Scraper

- Use for general scraping applications.
- Overall Length 10.25", Weight 0.35 lbs.



84054 - 4" Curved Blade V-Notch Puller

- For hard to reach panel clips.
- Overall Length 9.50", Weight 0.40 lbs.



83131 - Tape Measure - 16 Ft

- 16' x 1-1/16" wide.
- Coated blade for durability.
- Stainless case.
- Rubber molded for comfort.



**83132 - Flashlight Aluminum**

- Aluminum body with rubber grip.
- Five LED bulbs above 13000 mcd, white light.
- Weatherproof.
- Rubber ring around head of flashlight.
- Includes carry case.

**86990 - Mechanics Gloves****86991 - Fender Cover**

- Magnetic
- Oil Resistant
- Measure 34-1/2" W x 18-1/2" L

ALPHA INDEX

1/4" Drive Chrome	
Ratchets	68-69
Socket Sets	58-68
Sockets	72-76
3/8" Drive Chrome	
Ratchets	90-92
Socket Sets	77-90
Sockets	95-99
1/2" Drive Chrome	
Ratchets	112-113
Socket Sets	100-112
Sockets	116-119
3/4" Drive Chrome	
Ratchets	121
Socket Sets	120
Sockets	122
A	
Adapters	
1/4"	70
3/8"	94
1/2"	114
Ratcheting	243
Pass-Thru	130
Adjustable Wrenches	264, 265
B	
Body Tools	
	331-332
Bit Sockets	
Ball End Hex	141, 142, 149, 150
External Torx	136, 138, 140, 146, 152, 155
Hex	138, 139, 140, 141, 142, 143, 144, 148, 149, 150, 153
Bit Holders	147, 152
Long Ball	142, 149
Long Torx	137, 147, 152
Screwdriver	142, 153
Sets	134-143
Torx	136, 137, 138, 140, 143, 145, 146, 147, 151, 152, 154, 155
Triple Square	139, 140, 144, 150, 154
C	
Cable Cutter	
	348
Combination Wrenches - Ratcheting	
Combination Ratcheting	207-212
Flex Combination Ratcheting	222-225
Indexing Ratcheting	232, 233
Open End Ratcheting	234, 235
Ratcheting	226, 227
Reversible Combination Ratcheting	215-219
Stubby Combination Ratcheting	213, 214
Stubby Flex Combination Ratcheting	226, 227
XL Combination Ratcheting	202-206
XL Locking Flex Combination Ratcheting	220, 221
XL Spline Ratcheting	231
XL X-Beam Ratcheting	190-201
Combination Wrenches - Non-Ratcheting	
6 Pt. Combination	253-255
12 Pt. Long Pattern Combination	247-252
Stubby Combination	256, 257
XL X-Beam Non-Ratcheting	245, 246

Clips, Socket	36
Crowfoot Wrenches	260, 261
D	
Deep Offset Box End Wrenches	262
Dies	344
Door Panel Removers	354-355
Double Box, GearBox (XL)	228-230
Double Box, Half Moon	239, 240
Double Box, QuadBox	236, 238
Double Box, Ratcheting	238, 239
Double Box, S-Shaped	240, 241
Double-X Pliers	308-311
Drive Tools	
1/4" Drive	68-71
3/8" Drive	91-94
1/2" Drive	112-115
3/4" Drive	121
MultiDrive	54-57
E	
E-Torx Ratcheting Wrenches	
	242
External Torx Sockets	146, 152, 155
External Torx Socket Sets	136, 138, 140
Electronic Torque Wrenches	269, 270
Extensions	
1/4" Drive	70, 71
3/8" Drive	93, 94
1/2" Drive	114, 115
3/4" Drive	115
Impact	165, 172, 182, 189
MultiDrive	57
Vortex	130
F	
Fender Cover	
	356
Files	346-347
Flare Nut Wrenches	258, 260
Flashlight	356
Flex Flare Nut Wrenches	259
Flex Sockets	76, 99
Flex Socket Sets	67, 68, 89, 90
G	
GearBox Double Box Wrenches (XL)	
	228-230
GearRatchet™ Handle	126
Gloves	356
H	
Hacksaw	
	346
Half Moon Wrenches	239, 240
Hammers	
Ball Pein	325
Blacksmiths	326
Claw Hammer	325
Dead Blow	327
Drilling	326
Engineers	326
Rubber Mallet	326
Sets	325
Soft Face	326
Hex Bit Sockets	
Bit Sockets, Metric	144, 148, 153
Bit Sockets, SAE	144, 148, 154
Bit Sockets, Screwdriver	153

Hex (continued)	
Bit Sockets, Torx	145, 147, 151, 152, 154, 155
Bit Sockets, Triple Square	144, 150, 154
Bits, Replacements	147, 152
Bits, Vortex	129
Sets	134-143
Hex Keys - Flexible	156-158
Hooks & Picks	352, 353
I	
Impacts	
1/4" Drive	161-168
3/8" Drive	169-176
1/2" Drive	177-188
3/4" Drive	189-192
Adapters	166, 172, 182, 189
Extensions	165, 172, 182, 189
Hex Sockets	171, 175, 175, 180, 181, 187
Universal Joints	166, 173, 182
Universal Sockets	165, 168, 172, 176, 181, 188
K	
Knives	
	346
L	
Locking Extensions	
	71, 115
Locking Flex Wrenches (XL)	
	220, 221
M	
Magnetic Oil Drain Plug Socket Set	
	176
Magnetic Parts Tray	
	36
Mini Screwdrivers	277, 281, 282
Micrometer Torque Wrenches	269
Multi Drive Sets	
Introductory	13, 24
Career Builder Sets	14-17
Intermediate and Advanced Tool Sets	18-23, 25
N	
Nail Puller	
	322
Nut Drivers	
Non-Ratcheting	286-288, 289, 291
Ratcheting	298, 299
Shafts	300
O	
Oil Drain Plug Sockets, Magnetic	
	351, 352
Open End Non-Ratcheting Wrenches	263
Open End Ratcheting Wrenches	234, 235
P	
Parts Tray	
	36
Pass-Thru Ratchet & Socket Sets (XL)	
	124-126
Pliers	
Cushion Grip	308-315
Double-X	308-311
Dual Material	304-308
Hose Clamp	308
Insulated	315, 316
Locking	317, 318
Mini	307-308
Sets	304, 305, 308, 309, 311, 312, 315, 316, 317
Pry Bars	322, 331
Punch & Chisel	
Chisels	328, 329
Holder	329
Punches	329, 330,

Punch & Chisel (continued)	
Sets	327, 328
Q	
QuadBox Double Box Wrenches	
	236, 238
R	
Ratchets	
1/4" Drive	68, 69
3/8" Drive	90-92
1/2" Drive	112, 113
3/4" Drive	121
Sets	55, 56
Ratcheting Screwdrivers	294-297
Ratcheting Nut Drivers	298, 299
Reversible Combination Wrenches	215-219
S	
Scrapers	
	354
Serpentine Belt Tool Set	
	351
Screwdrivers	
Cabinet Tip	285
Cushion Grip	286-288
Dual Material	274-282
Insulated	289, 290
Mini	277, 281, 282
Nut Driver, Non-Ratcheting	286-288, 289, 291
Nut Driver, Ratcheting	298, 299
Phillips	279, 285, 287
Pozidriv	280
Ratcheting Screwdriver	294-297
Screw Holding Drivers	292
Solid Handle	283-285
Sets	148 - 152
Slotted	279, 284, 287
Torx	280
Sets, Socket Chrome	
Multi Drive	13-25, 40-54
1/4" Drive	58-68
3/8" Drive	77-90
1/2" Drive	100-112
3/4" Drive	120
Bit Socket	134-143
External Torx	136, 138, 140
Flex	67, 68, 89, 90
Sets, Socket Impact	
1/4" Drive	161-165
3/8" Drive	169-172
1/2" Drive	177-181
Sets, Wrenches	
Adjustable	264, 365
Combination, Ratcheting	207-210
Combination, Non-Ratcheting	247-251, 253, 254
Crowfoot	260-261
Deep Offset Box	262
Double Box Ratcheting	238, 239
E-Torx Ratcheting	242
Flare Nut	259
Flex Combination Ratcheting	223-224
Flex Flare Nut	258
Half-Moon Double Box Ratcheting	239
Indexing Ratcheting	232
Open End Non-Ratcheting	263

Sets, Wrenches (continued)	
Open End Ratcheting	234
QuadBox Double Box Ratcheting	236-238
Reversible Combination Ratcheting	215-218
S-Shape Double Box Ratcheting	240,241
Stubby Combination Ratcheting	213
Stubby Combination Non-Ratcheting	256
Stubby Flex Combination Ratcheting	226
XL Combination Ratcheting	202-205
XL GearBox Double Box Ratcheting	228,229
XL Locking Flex Combination Ratcheting	220
XL Spline Combination Wrenches	231
XL X-Beam Ratcheting	196-197
XL X-Beam Non-Ratcheting	245
Snips	348
Sockets	
1/4" Drive	72-76
3/8" Drive	95-99
1/2" Drive	116-119
3/4" Drive	122
Bit Sockets	144-154
Bit Holder Sockets	147, 152
External Torx Sockets	146, 152, 155
Flex Sockets	76,99
Magnetic Oil Drain Plug Sockets	352
Screwdriver Bit Sockets	68
Spark Plug Sockets	94
Torx Press Fit Bit Sockets	145,151,154
Torx Bit Sockets	145,146, 147, 151 152, 154, 155
Triple Square Bit Sockets	144,150,154
Torx Tamper-Proof	145,151
Vortex Bit Sockets	129
Vortex Sockets	127-128
Socket Clips	36
Socket Rails	36
Spark Plug Sockets	94
Spline Combination Wrenches (XL)	231
Stubby Wrenches	213,214,256,257,226,227
T	
Tape Measure	355
Taps	344
Tap and Die Sets	335-342
Tire Pressure Monitoring	270
Tool Storage	
Accessories	36
Ball Bearing Series	
Cabinets	33,34
Chests	33,34
Hand Boxes& Bags	35
XL Series	
Carts	32
Cabinets	30,31
Chests	30,31
Torque Wrenches	269-270
Torx Bit Socket Sets	136, 137, 138, 140, 143
Torx Keys	156, 157
Torx Screwdrivers	280
U	
Universal Joints	69,70,92,93,114
V	
Vortex Bit Sockets	
Bit Sockets	129
Sockets	127-128

W	
Wrenches	
Adjustable	264,265
Combination, Ratcheting	207-212
Combination, Non-Ratcheting	247-255
Crowfoot	260,261
Deep Offset Box	262
Double Box Ratcheting	238,239
E-Torx Ratcheting	242
Flare Nut	259
Flex Combination Ratcheting	222-225
Flex Flare Nut	258,260
Half-Moon Double Box Ratcheting	239,240
Indexing Ratcheting	232,233
Open End Non-Ratcheting	263
Open End Ratcheting	234,235
QuadBox Double Box Ratcheting	236,238
Reversible Combination Ratcheting	215-219
S-Shape Double Box Ratcheting	240,241
Stubby Combination Ratcheting	213, 214
Stubby Combination Non-Ratcheting	256,257
Stubby Flex Combination Ratcheting	226,227
XL Combination Ratcheting	202-206
XL GearBox Double Box Ratcheting	228-230
XL Locking Flex Combination Ratcheting	220,221
XL Spline Combination Wrenches	231
XL X-Beam Ratcheting	190-201
XL X-Beam Non-Ratcheting	245,246
X	
XL Combination Ratcheting	202-206
XL Locking Flex Combination Ratcheting	220,221
XL Pass-Thru Ratchet & Socket Sets	124-126
XL Spline Combination Wrenches	231
XL X-Beam Ratcheting	190-201
XL X-Beam Non-Ratcheting	245,246